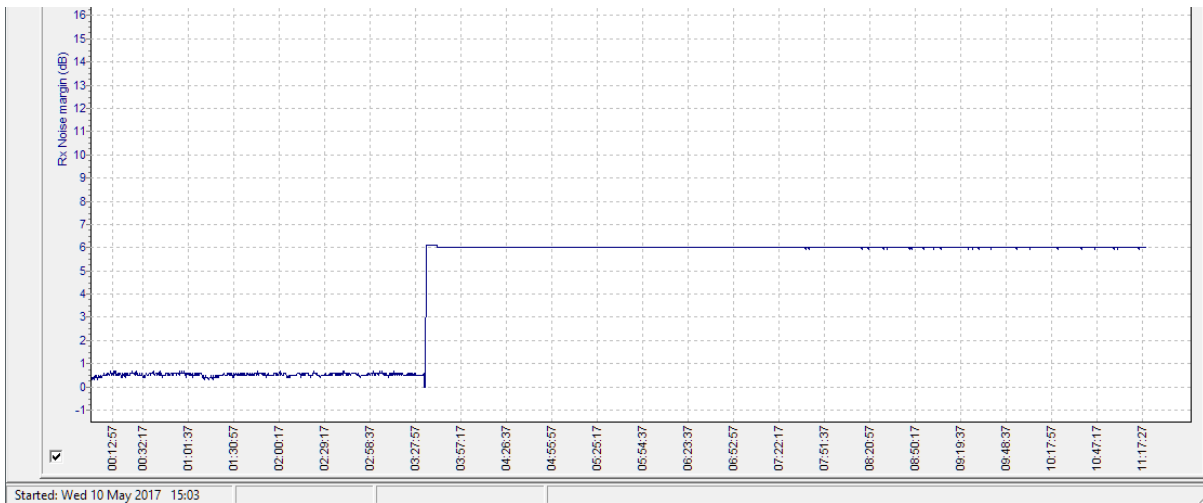
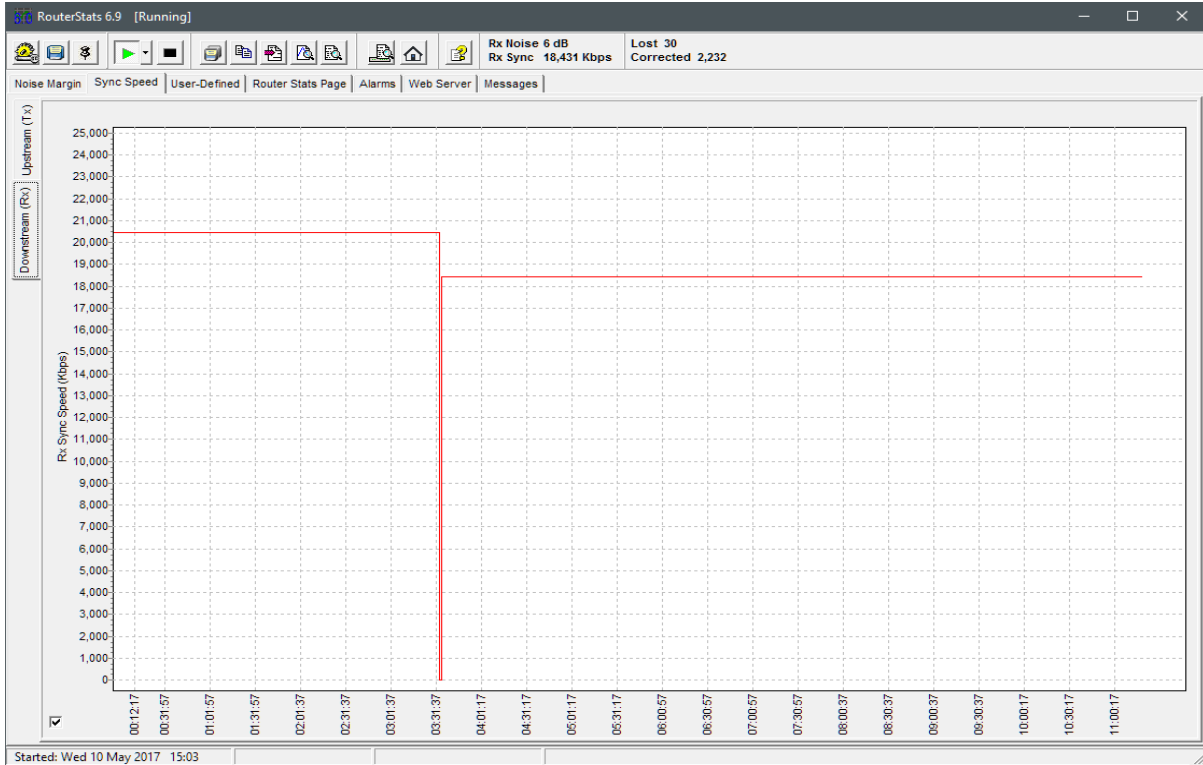
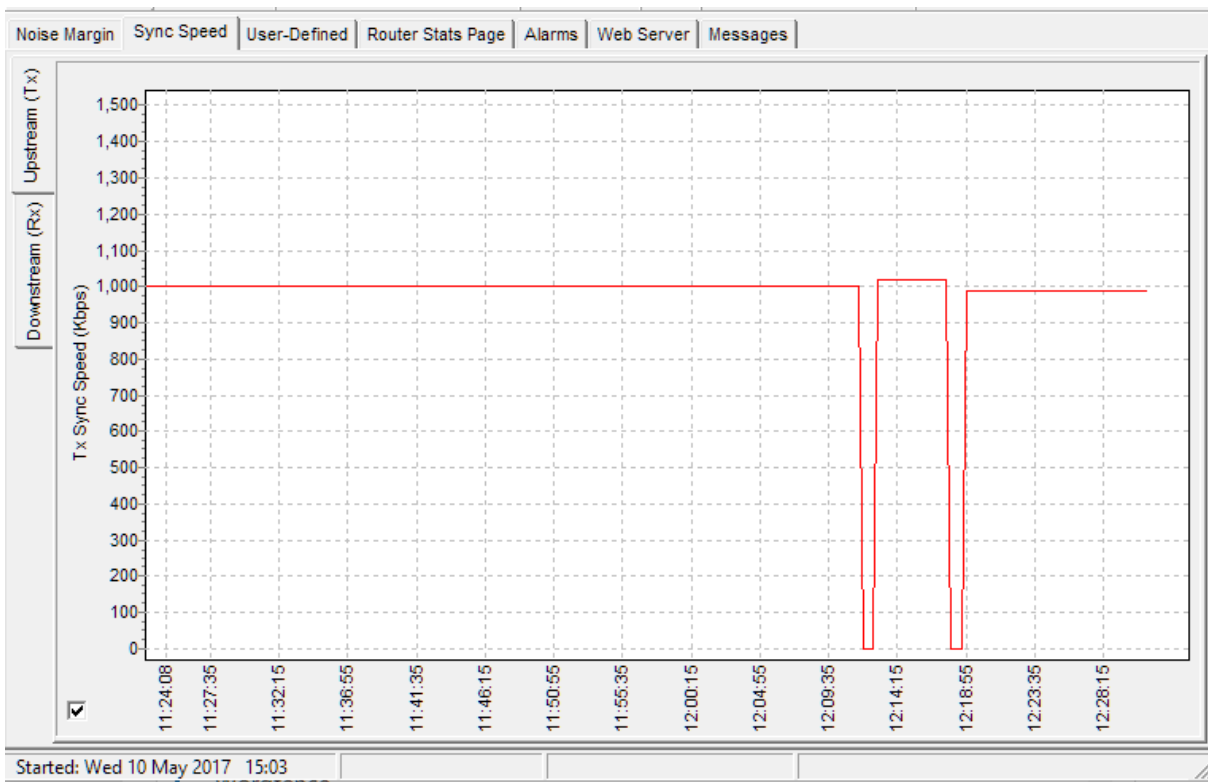


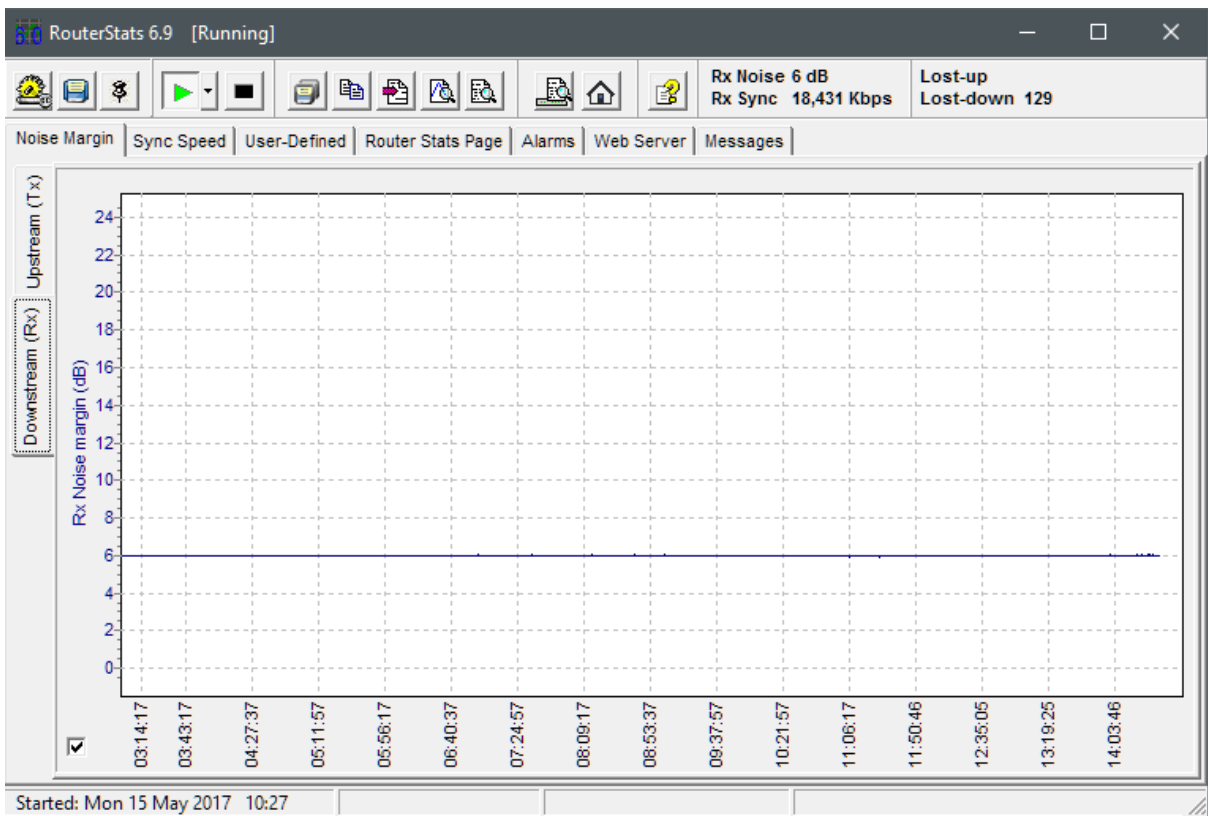
One complete cycle after DLM reset, starting 12/05/2017



DLM was reset at 03:33 on 12/05/2017, despite strong request not to do so. The result will be 4-10 days of relative stability before it deteriorates again. At some point it might occur to someone that they can keep resetting it manually until I agree it's fixed and close the complaint, after which the problem will return. However, I cannot agree to close this ticket until it's been clear (without a DLM reset) for a month. I think that's a reasonable test period.



Drop-outs: 12:13, 12:18,

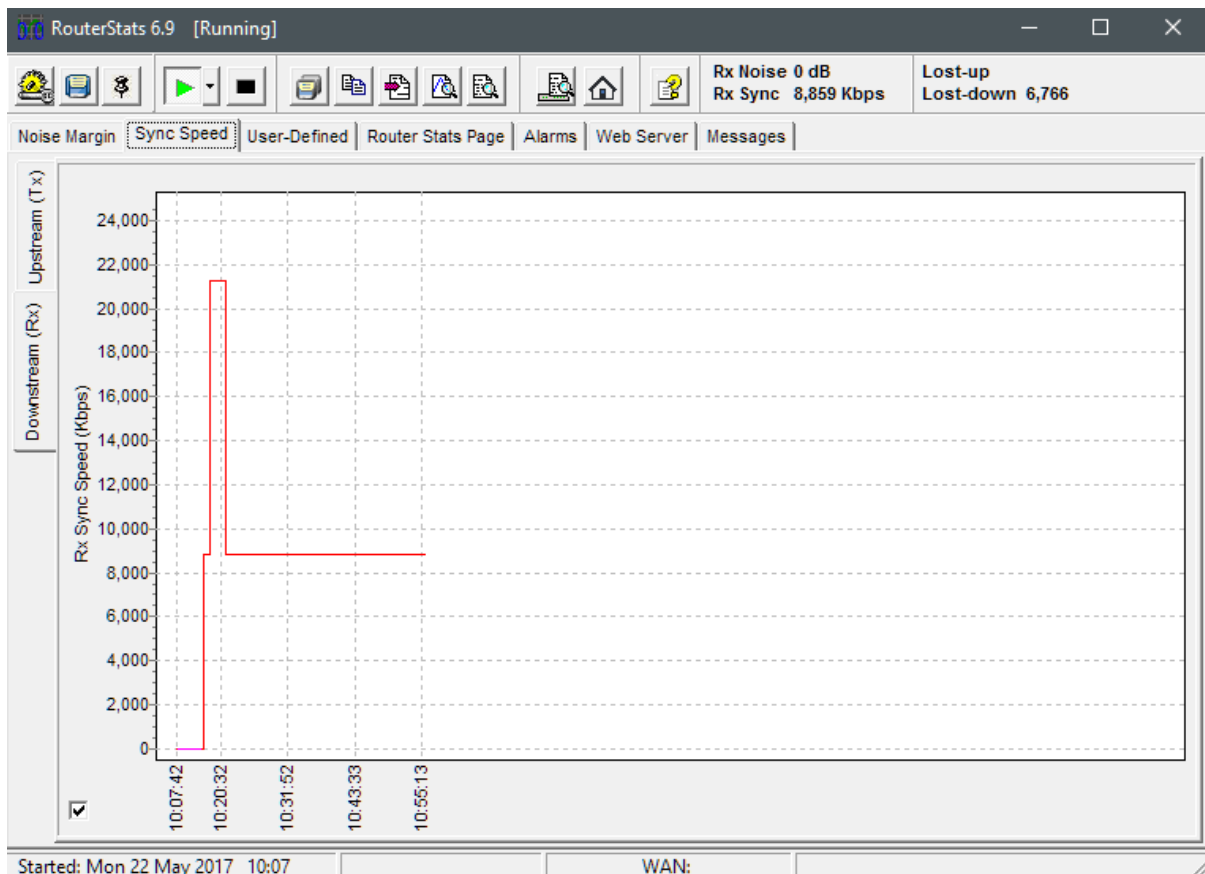


22/5/2017

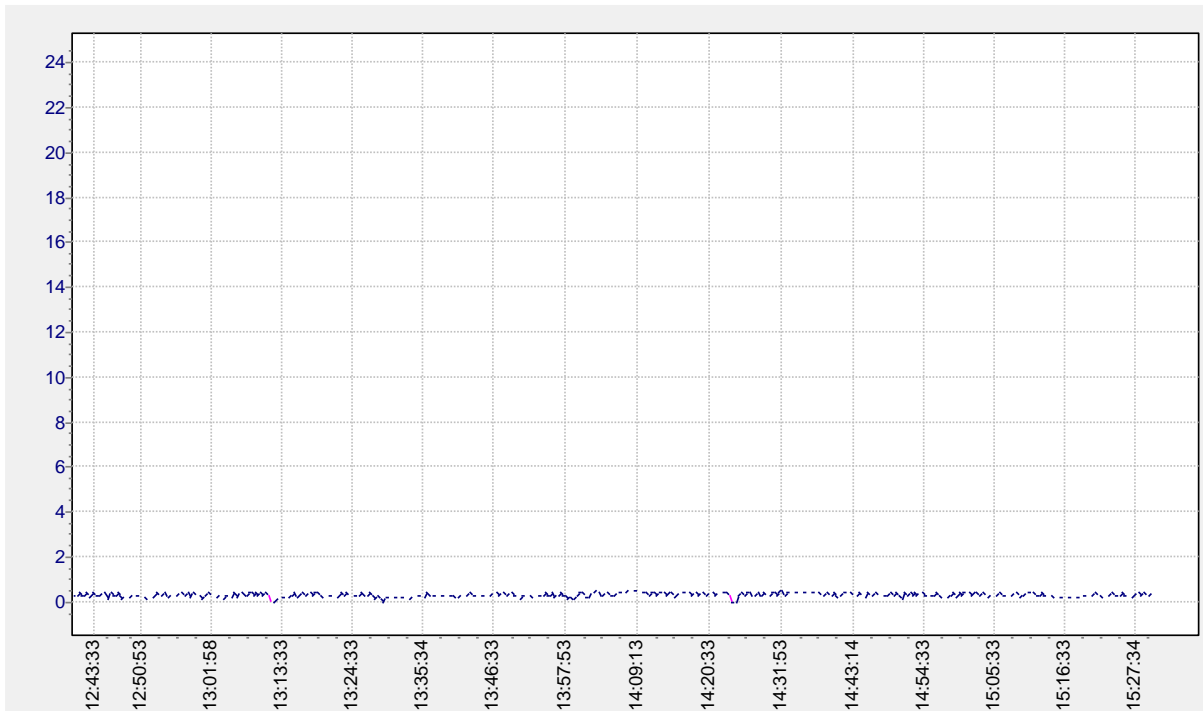
22/5/2017

Service deteriorated sometime over the weekend. This is still on the standard TT router.

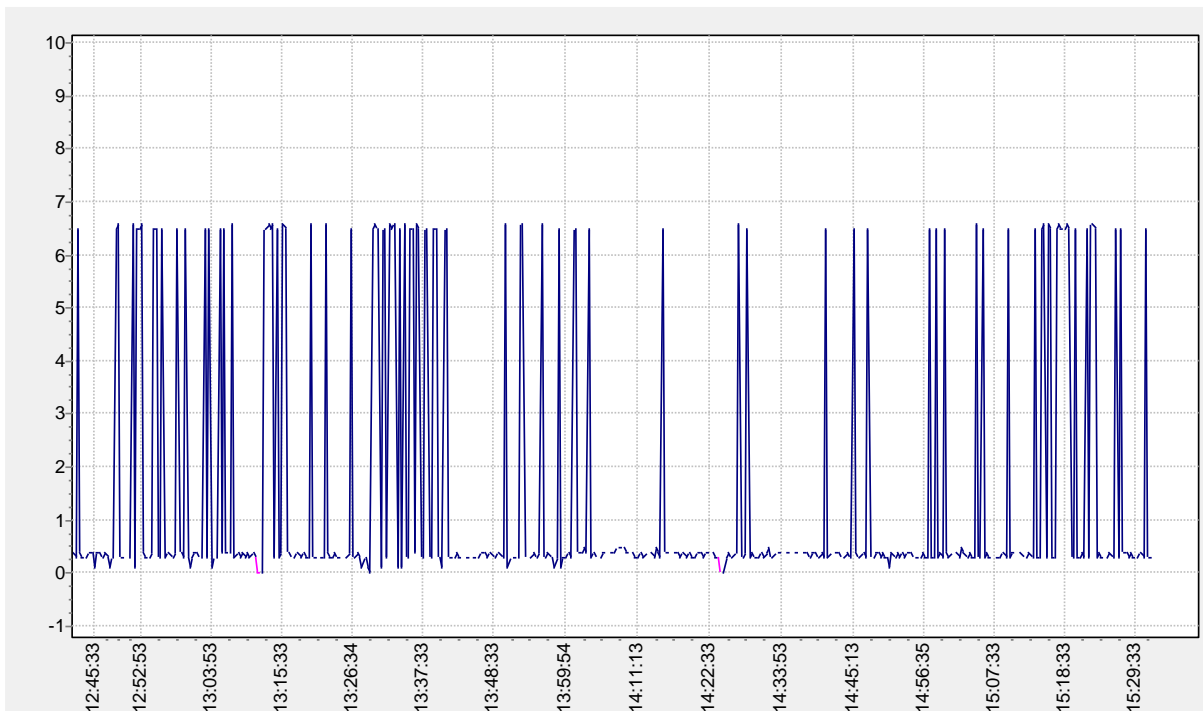
ADSL STATISTICS		
Mode:	ADSL2 PLUS	
Type:	ANNEX_A	
Status:	Showtime	
	Downstream	Upstream
Rate (Kbps):	21289 kbps	1019 kbps
SNR Margin (dB):	0.2	6.5
Attenuation (dB):	23.0	11.2
Output Power (dBm):	0.0	10.3
Super Frames:	6555233	6555230
RS Correctable Errors:	3569	0
RS Uncorrectable Errors:	6719	0
HEC Errors:	12917	0
Total Cells:	164865668	88671404
Data Cells:	10765352	4859461
Bit Errors:	0	0

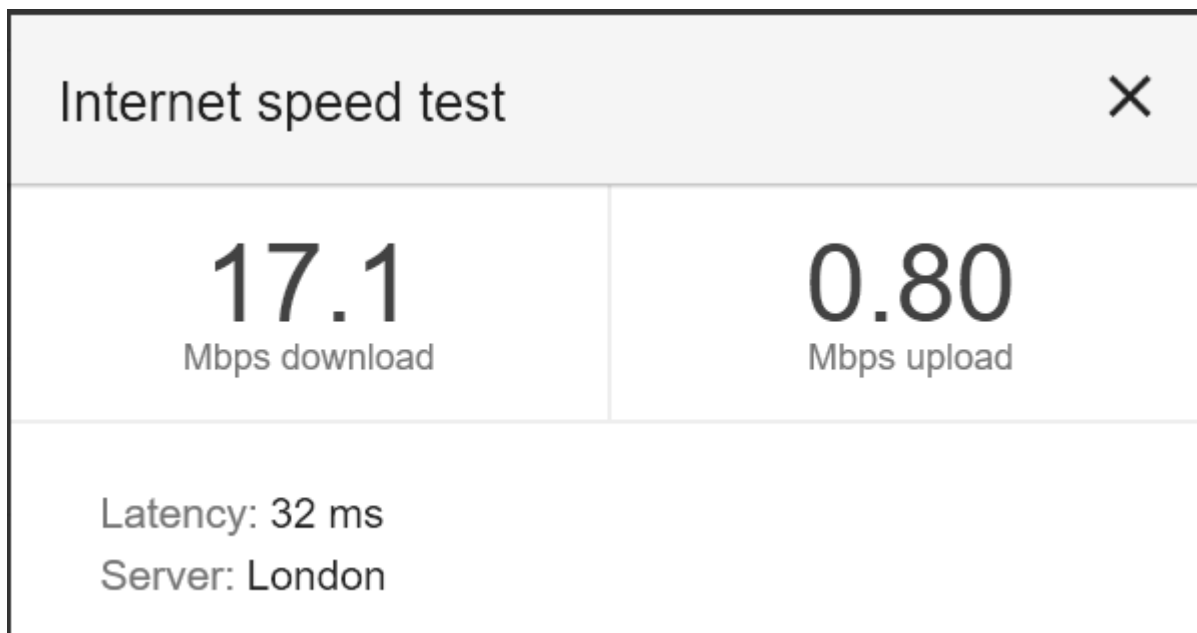


Now back to normal after DLM reset. This time, it took about 8 days.



Upstream is all over the place...





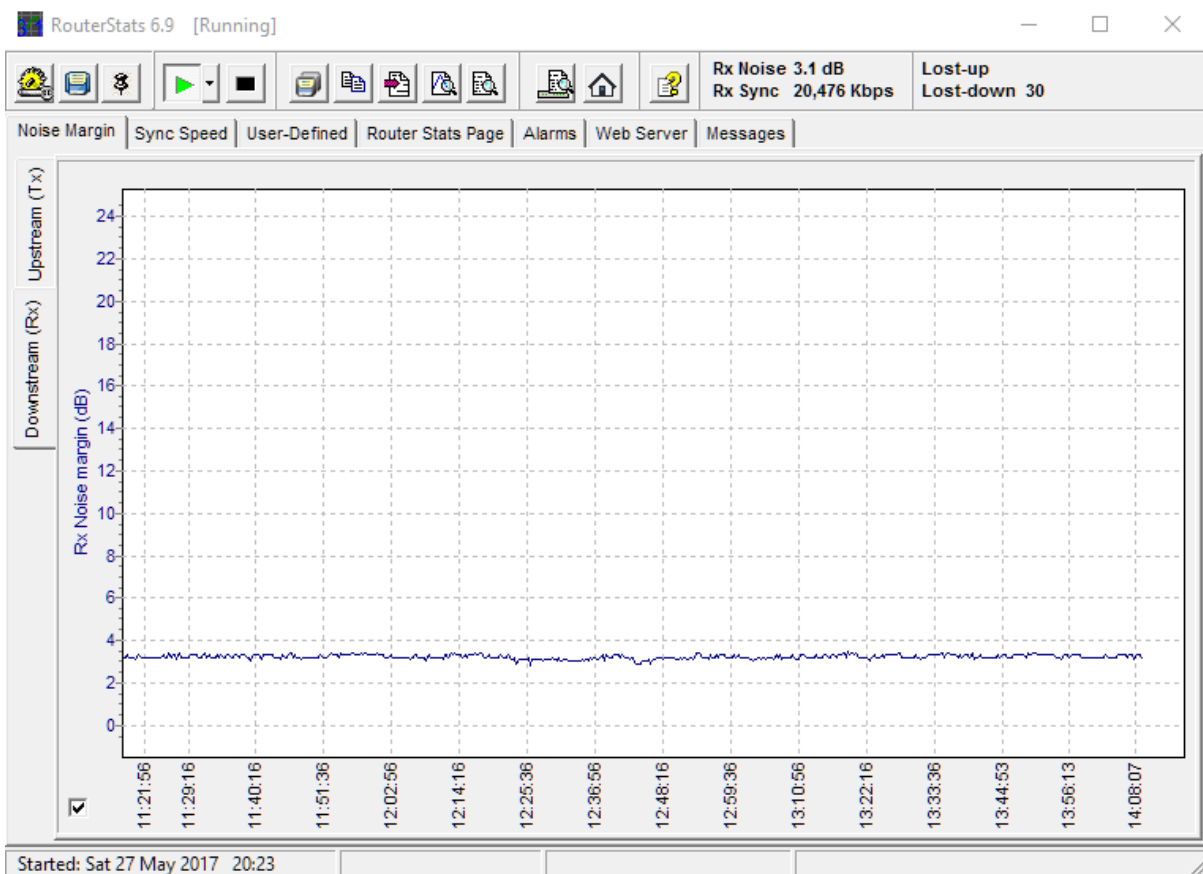
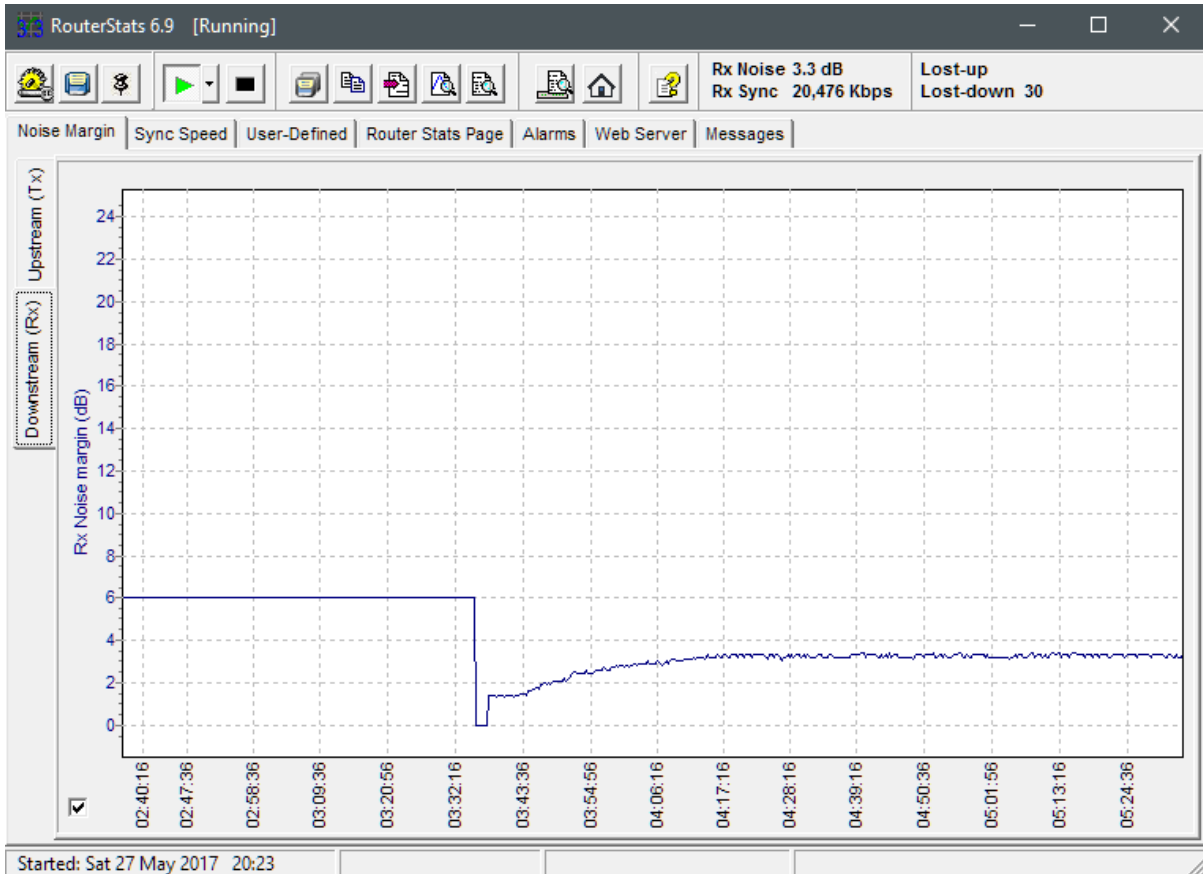
Time to change router to the new D-Link DSL-3782.

Cannot log the history on the new router, but it showed the same behaviour. SNR was dropping below 2, when another **unscheduled DLM reset** put it back to 6. It is clear that the DLM is still broken, requiring manual resets every 6-8 days. This reset has delayed the process by about another 6-8 days or so.

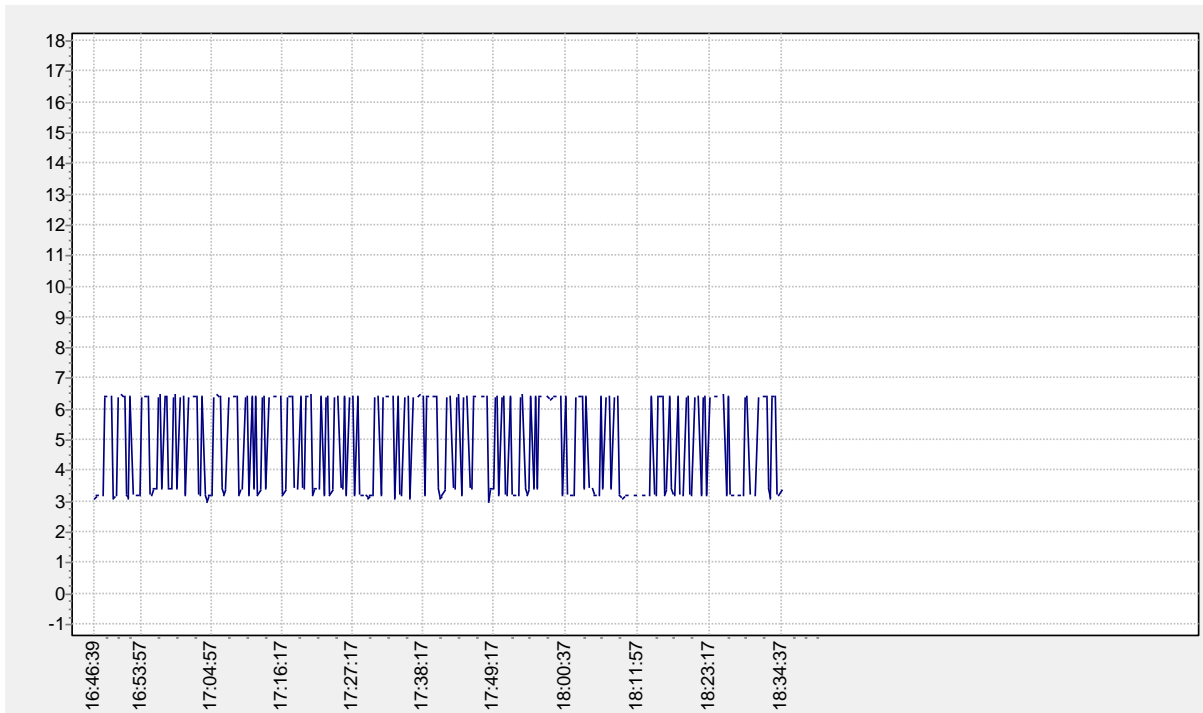
Putting the standard router (D-Link DSL-2640R) back on.



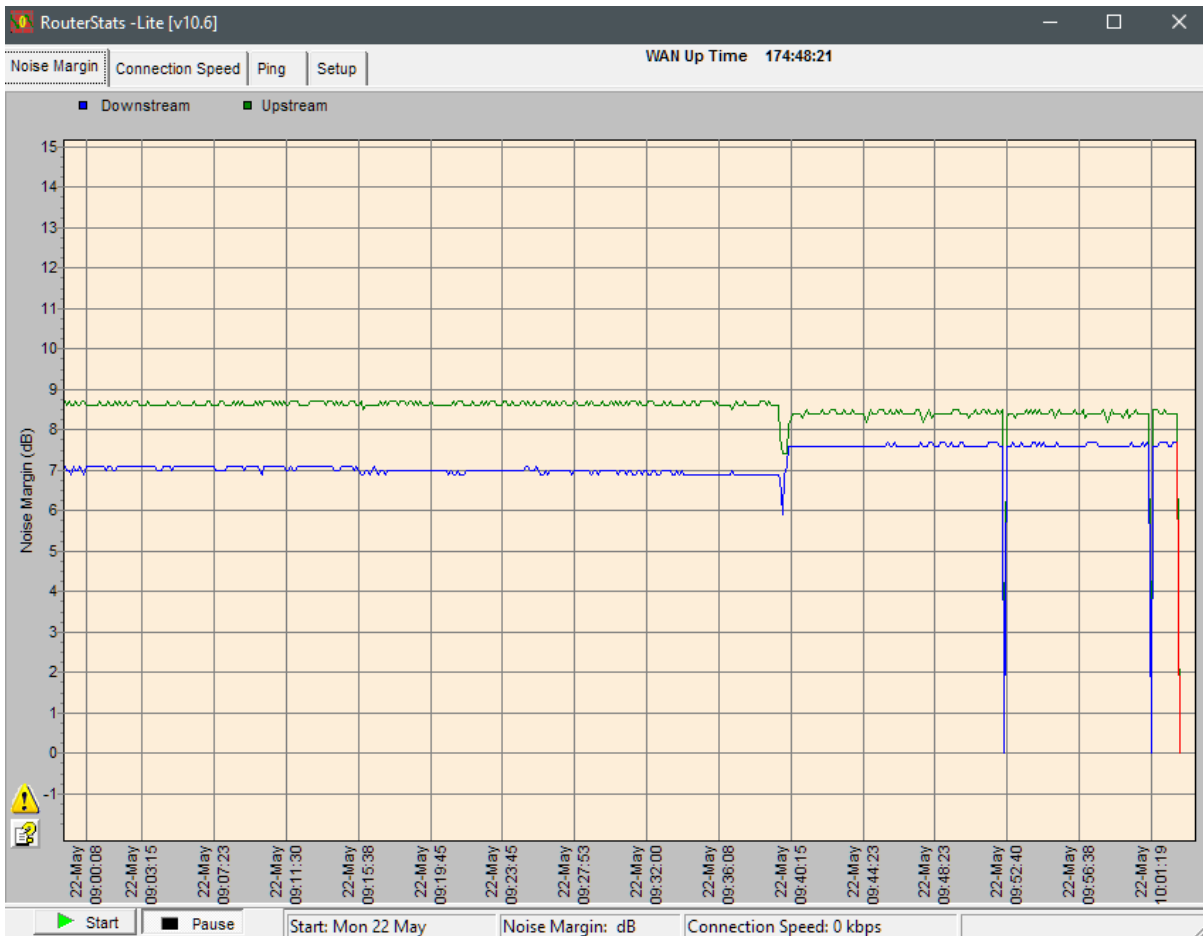
Stable for 48 hours, then, suddenly:



Upstream is a bit odd:



Meanwhile, on Line 2:



SYSTEM CHECK

Test your Ethernet(1-4) Connection:

PASS

Test ADSL Synchronization:

PASS

INTERNET CONNECTIVITY CHECK

Test the assigned IP address:

FAIL

Ping ISP Default Gateway:

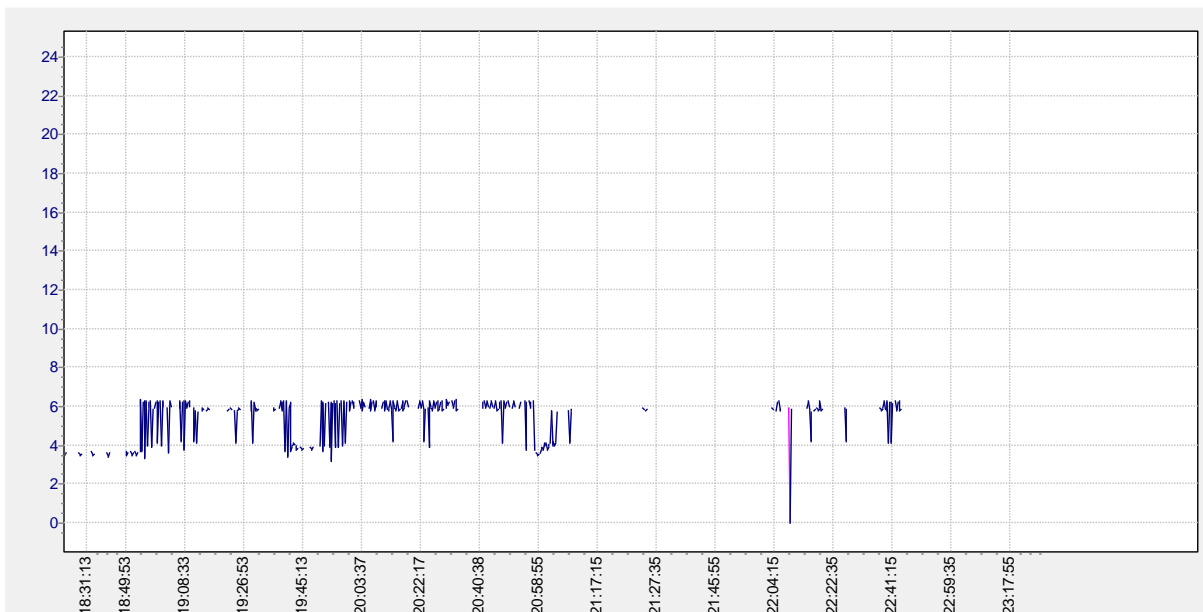
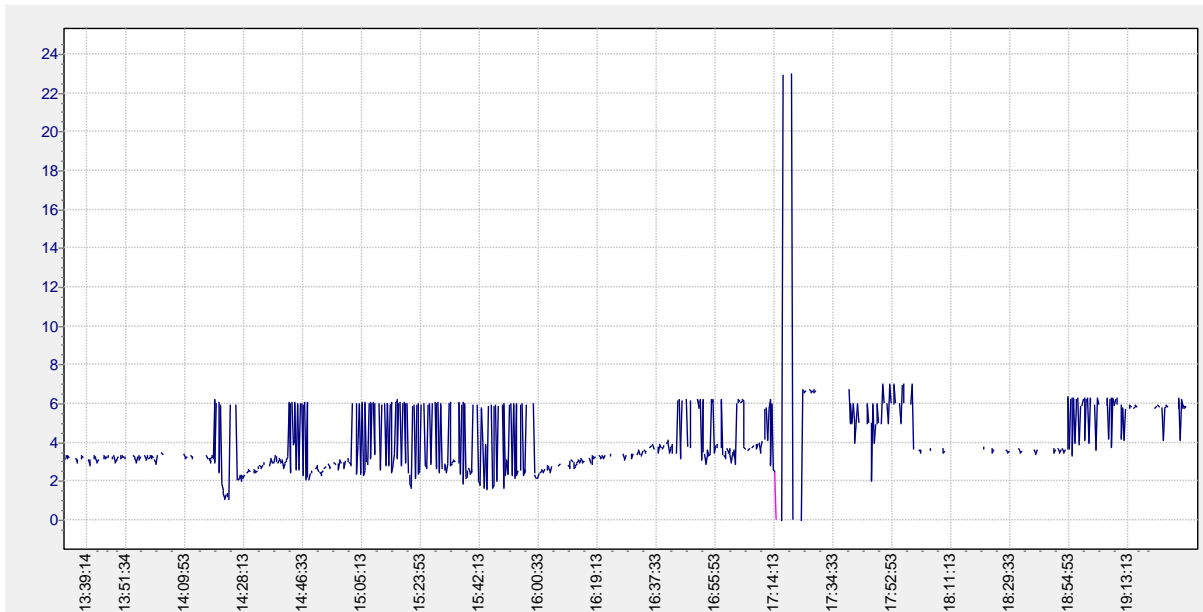
FAIL

Ping Preferred DNS server:

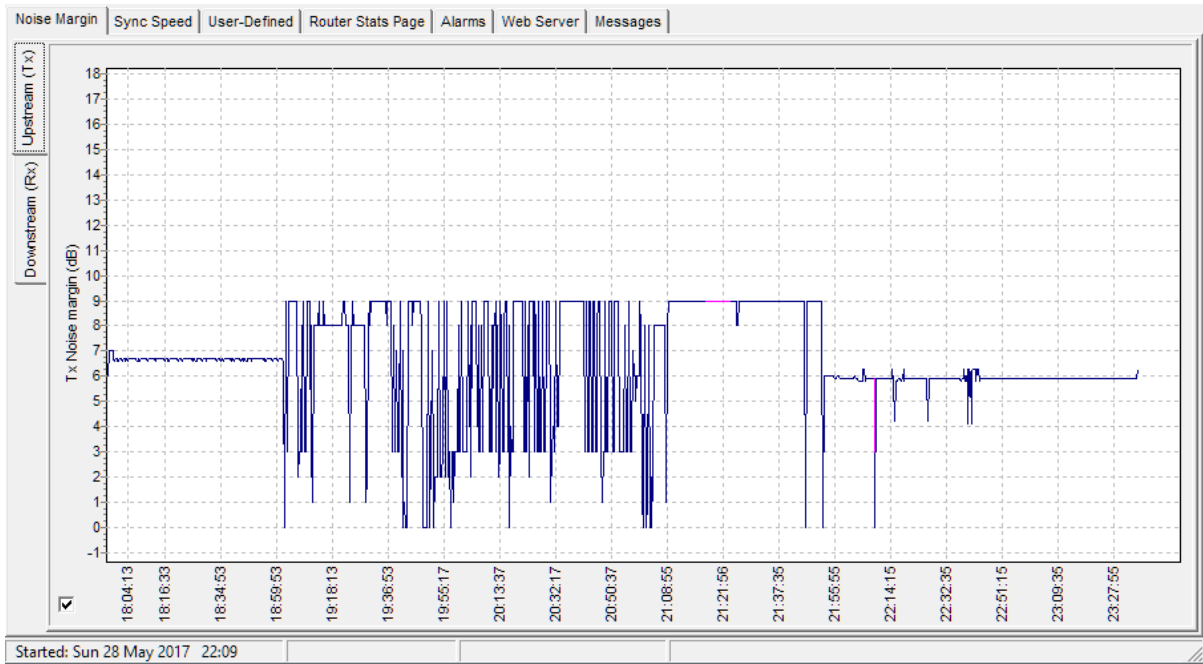
FAIL

Re_run Diagnostics Tests

Downstream:



Upstream:

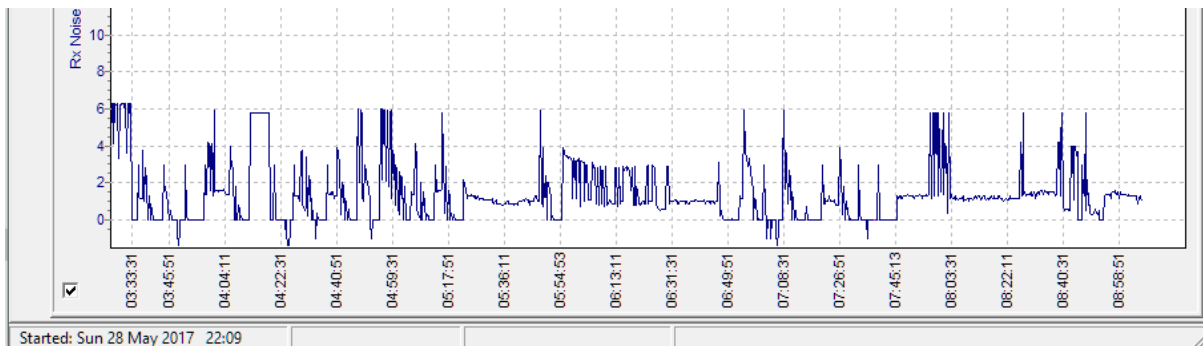


This what happens if you leave this, and do not do a DLM reset:

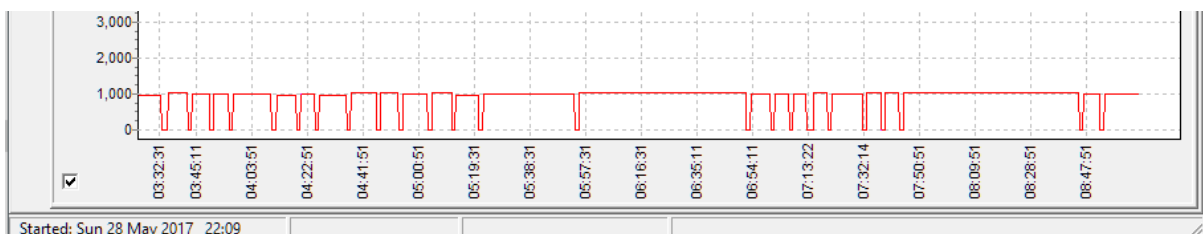
DOWN:



DOWN margin:



UP:



Mode:	ADSL2 PLUS	
Type:	ANNEX_A	
Status:	Showtime	
	Downstream	Upstream
Rate (Kbps):	20477 kbps	963 kbps
SNR Margin (dB):	0.9	6.5
Attenuation (dB):	23.0	11.4
Output Power (dBm):	0.0	9.3
Super Frames:	27234	27231
RS Correctable Errors:	12448	0
RS Uncorrectable Errors:	1	0
HEC Errors:	0	0
Total Cells:	380722	269882
Data Cells:	1360252	335418
Bit Errors:	0	0

And that is one (actually, two) complete cycle(s) of what has been happening for nearly 4 years, except for a six-month trouble-free service when DLM was removed.